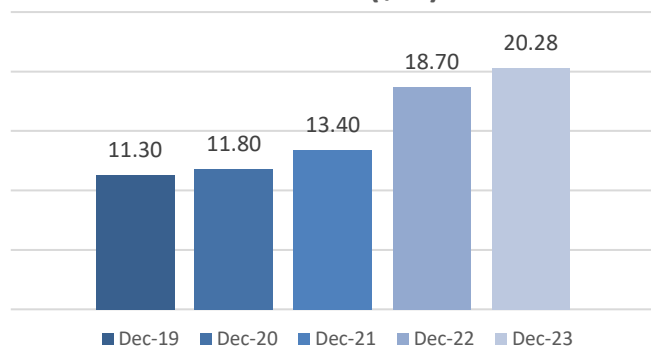
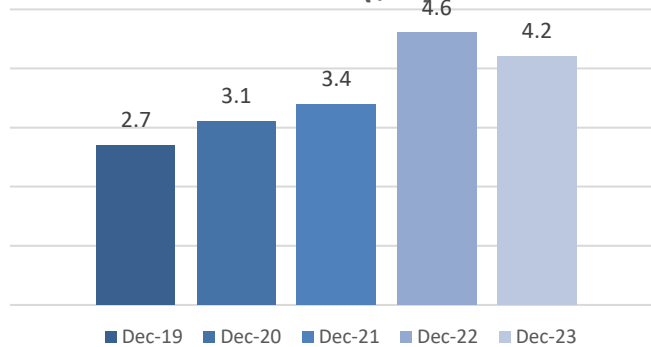


Profit or Loss		Dec 23 \$,000's	Dec 22 \$,000's	Dec 21 \$,000's	Dec 20 \$,000's	Dec 19 \$,000's
Services revenue	\$	11,188	9,691	5,776	5,446	6,894
Products revenue	\$	8,673	8,939	7,501	6,332	4,361
Technology revenue	\$	422	22	101	20	-
Revenue	\$	20,283	18,652	13,378	11,798	11,255
Cost of sales	\$	(9,704)	(8,996)	(6,115)	(5,809)	(5,669)
Gross Profit	\$	10,579	9,656	7,263	5,989	5,586
<i>Gross profit margin</i>	%	52.2	51.8	54.3	50.8	49.6
General administrative expenses (excl. interest, tax, depreciation & amortisation)	\$	(6,602)	(5,038)	(3,895)	(2,893)	(2,839)
EBITDA	\$	4,198	4,618	3,368	3,096	2,747
<i>EBITDA Margin</i>	%	20.7	24.8	25.2	26.2	24.4
Depreciation & amortisation expense	\$	(1,702)	(1,612)	(1,287)	(1,175)	(956)
EBIT	\$	2,496	3,006	2,081	1,921	1,791
<i>EBIT Margin</i>	%	12.3	16.1	15.6	16.3	15.9
Interest	\$	(336)	(266)	(218)	(223)	(216)
Profit before tax	\$	2,160	2,740	1,863	1,698	1,575
<i>Profit before tax margin</i>	%	10.6	14.6	13.9	14.4	14.0
Income Tax Expense	\$	(472)	(740)	(341)	(510)	(419)
Profit after tax	\$	1,689	2,000	1,522	1,188	1,156
<i>Profit after tax margin</i>	%	8.3	10.7	11.4	10.1	10.3
Basic and diluted earnings per share	c	1.53	1.83	1.57	1.24	1.22
Dividends for Period (cents)	c	0.8	0.8	0.6	0.6	0.5

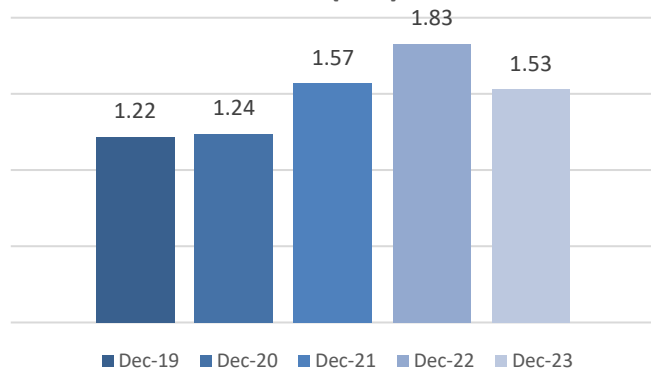
Revenue (\$m)



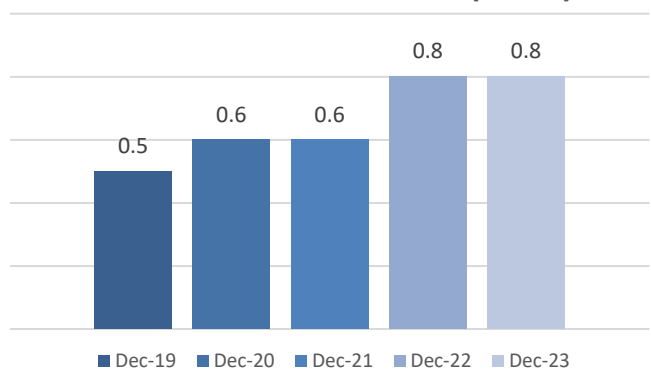
EBITDA (\$m)



EPS (\$m)



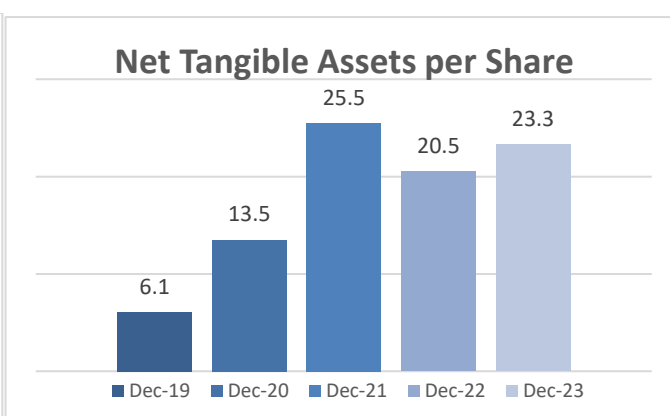
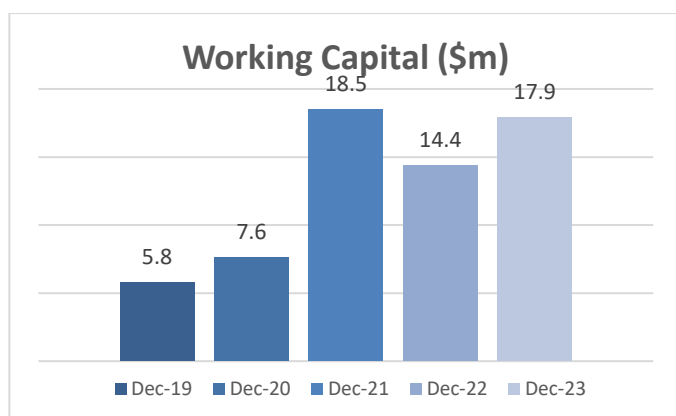
Dividends for the Period (cents)



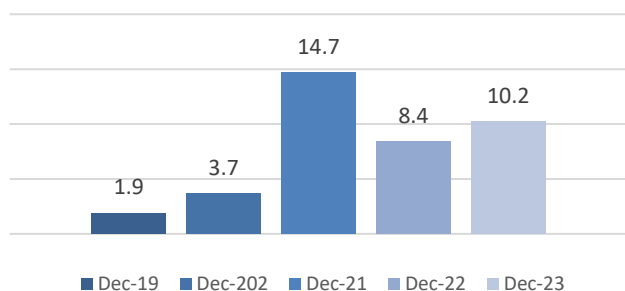
Balance Sheet

	Dec 23 \$,000's	Dec 22 \$,000's	Dec 21 \$,000's	Dec 20 \$,000's	Dec 19 \$,000's
Cash and cash equivalents	10,207	8,426	14,730	3,711	1,880
Trade and other receivables	8,870	7,788	6,755	4,501	5,913
Inventories	7,529	7,034	4,427	4,070	2,546
Current Tax Assets	-	-	769	-	-
Current Asset	26,606	23,248	26,681	12,282	10,339
Property, plant and equipment	20,596	18,160	13,575	13,523	10,775
Deferred tax assets	919	743	558	535	379
Goodwill	6,261	6,261	-	-	-
Intangible assets	249	276	146	78	30
Rental Bond	41	43	-	-	-
Non-Current Assets	28,066	25,483	14,279	14,136	11,184
Total Assets	54,672	48,731	40,960	26,418	21,523
Trade and other payables	3,955	3,998	4,101	1,284	1,187
Employee Benefits	2,362	2,099	1,723	1,449	1,044
Financial Liabilities	1,793	2,509	2,332	1,666	1,930
Current tax liabilities	561	488	-	302	414
Current Liabilities	8,671	8,865	8,156	4,701	4,575
Financial Liabilities	12,020	9,433	7,356	8,634	6,018
Deferred Tax Liabilities	1,641	1,390	586	-	-
Employee Benefits	222	124	73	70	52
Non-Current Liabilities	13,883	10,947	8,015	8,704	6,070
Total Liabilities	22,554	19,812	16,171	13,405	10,645
Net Assets	32,118	28,919	24,789	13,013	10,878
Issued Capital	19,021	18,512	16,960	7,205	6,860
Retained Earnings	13,097	10,407	7,829	5,808	4,018
Total Equity	32,118	28,919	24,789	13,013	10,878
Working Capital	17,935	14,383	18,525	7,581	5,764
Net Tangible Assets per share	23.27	20.46	25.48	13.51	6.09

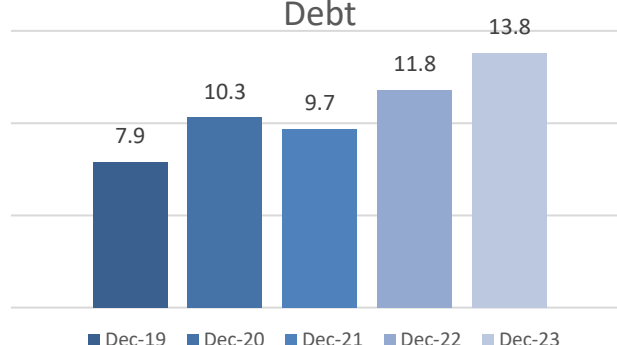
Note: Dec 21 Cash includes \$9.36m from the capital raise to fund the Queensland acquisition in January 2022



Cash on Hand



Debt



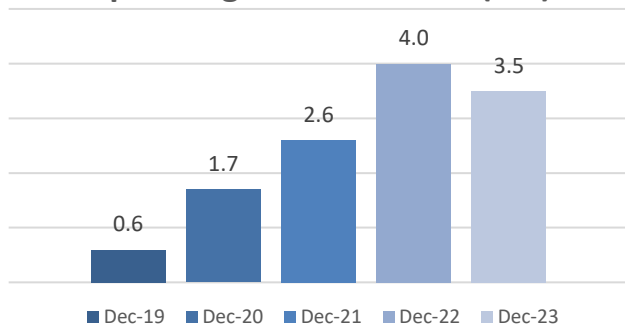
Cash Flows

	Dec 23 \$,000's	Dec 22 \$,000's	Dec 21 \$,000's	Dec 20 \$,000's	Dec 19 \$,000's
From Operating Activities	3,485	3,956	2,570	1,734	575
From Investing Activities	(658)	(162)	(749)	(1,233)	(191)
From Financing Activities	(1,550)	(1,052)	8,001	(788)	(697)
Change in Cash	1,277	2,742	9,822	(287)	(313)

Other

	Dec 23	Dec 22	Dec 21	Dec 20	Dec 19
Closing Share Price	0.895	0.825	0.860	0.625	0.710

Operating Activities Cash (\$m)



Closing Share Price

